

Edition : 1.0
Date: (03/26)

Instruction Manual

For modular workplace storage system **BENCH TOP & KICK BOARD KIT** **ITC-TOPK**

Order Code: (T7690)

BEFORE ASSEMBLING

Please read this instruction manual before assembly.



CAUTION

Before assembly please pay attention to the following points in priority;

Confirmation of components: Before assembling, please confirm all parts arrived and are in good order.

Site for assembly: Please assemble it on the soft floor such as smooth carpet and flannel blanket. When you assemble on wooden floor, please put thin towels on the floor.

Points for attention when assembling: Please wear gloves to ensure that it can be assembled safely, and use two persons to help in the assembly process.

Matters needing attention for operation:

- Do not use for in proper use.
- Do not use it on inclined surface or uneven places.
- Do not use it when screws and fasteners are loosened.

Safe Use Guidelines

To ensure safe operation:

- Maximum bench top load capacity: 500kg (evenly distributed)
- Always distribute loads evenly across the bench surface
- Do not stand or climb on the bench top
- Ensure cabinets remain level during use
- Periodically check fixing bolts remain tight

Workstation Stability

For best performance:

- Use only on solid level workshop flooring
- Adjust levelling feet if movement occurs
- Avoid sudden impact loading on bench surface

Surface Care & Maintenance

The laminated bench top surface is resistant to oil and alkali but should still be maintained properly:

- Clean spills immediately
- Avoid prolonged chemical exposure
- Use a soft cloth with mild detergent for cleaning
- Do not use abrasive cleaners

Routine Inspection

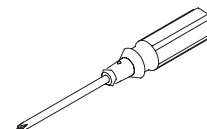
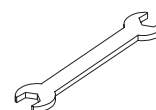
Regularly check:

- Bench top fixing bolts
- Cabinet alignment
- Levelling feet contact with floor
- Kick board mounting security

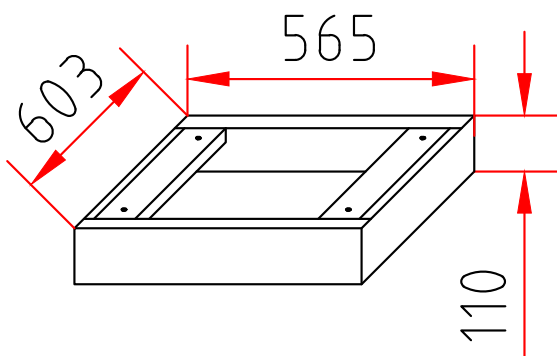
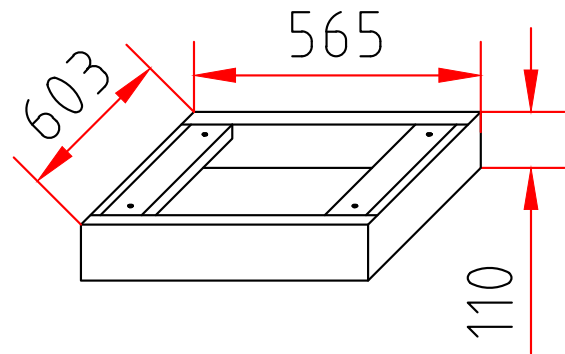
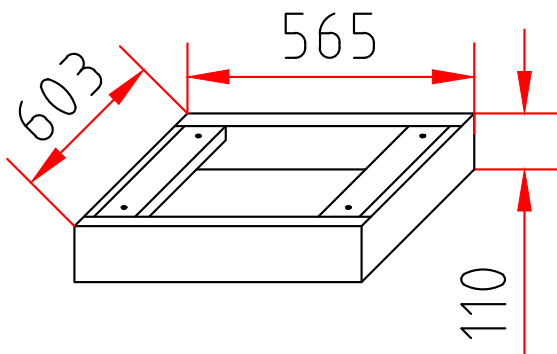
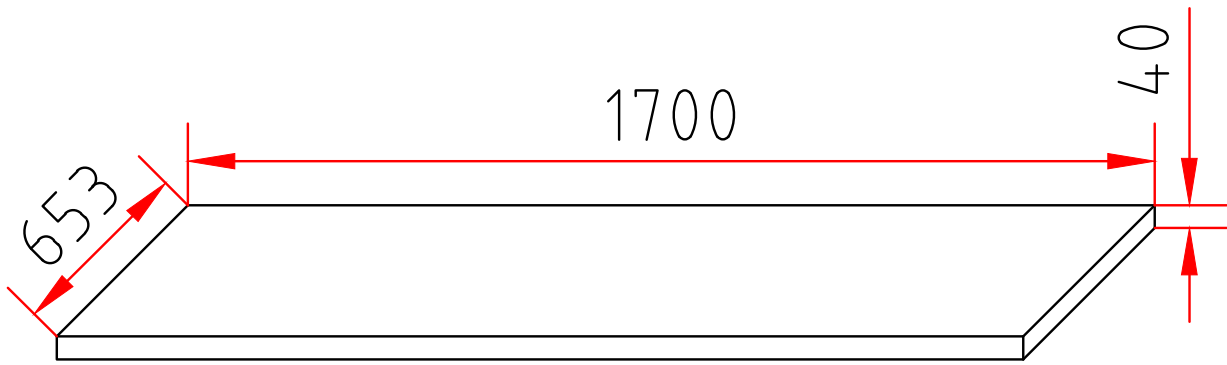
Tighten components as required.

TOOLS REQUIRED FOR ASSEMBLY

- Phillips Head Screwdriver
- Spanners



PARTS LIST



Description	Qty
Bench Top 1700 X 653 X 40mm	1
Kick Boards 565 x 603 x 110mm	3

Assembly Instructions

Before Assembly

Before starting installation:

- Ensure all cabinets are empty before positioning
- Confirm the floor surface is level, solid, and suitable for installation
- Check all supplied components and fixing hardware are present
- Two people are recommended when lifting and positioning the bench top

Step 1 – Position the Cabinets

1. Place the three modular cabinets in their desired workstation location
2. Align cabinet fronts so they sit flush with each other
3. Ensure spacing matches the bench top width
4. Confirm cabinet tops are clean and free from debris before installation

Step 2 – Install Kick Board Bases

Each cabinet receives its own kick board base

1. Position one kick board base underneath each cabinet
2. Align fixing holes with cabinet mounting points
3. Secure using supplied fixing hardware
4. Adjust leveling feet until cabinets sit stable and level

Important:

Ensure all leveling feet are firmly contacting the floor before continuing.

Step 3 – Level the Cabinets

1. Place a spirit level across cabinet tops
2. Adjust kick board leveling feet as required
3. Confirm cabinets are level across width and depth
4. Recheck cabinet alignment after adjustments

Proper leveling ensures correct bench top installation and load performance.

Step 4 – Install Bench Top

1. Carefully lift the bench top into position
2. Align the pre-installed nut inserts underneath the bench top with cabinet fixing points
3. Insert supplied bolts through cabinet tops into bench top inserts
4. Tighten bolts evenly across all cabinets

Do not fully tighten one side before securing all fixing points.

Step 5 – Final Inspection

After installation:

- Confirm all fixings are secure
- Ensure bench top sits flush across all cabinets
- Recheck cabinet level
- Confirm workstation stability before use

Installation is now complete.

Optional Configuration

One kick board base can be removed if installing the optional ITC-WK1 Cabinet Trolley Kit to create a mobile cabinet section within the workstation setup.

Ensure trolley installation instructions are followed separately.

Optional Accessories

This kit incorporates a heavy-duty bench top & kick boards to convert our modular cabinets into a professional workstation that can take pride of place in any professional workshop.

The bench top is a heavy duty 40mm thick laminated MDF bench top with an 2mm high density oil resistant surface for the most demanding industrial applications. Finished with a square PVC edge to withstand years of punishment. With a width of 1700mm & a depth of 653mm the bench top is designed to match any 3 sets of our modular cabinets with the underside of the bench top is pre-installed with nut-inserts to easily attach any of our modular cabinets.

The kit includes 3 sets of steel kick board cabinet bases, each with adjustable levelling feet for levelling on uneven workshop floors. The kickboards are designed with an ergonomic recessed “toe kick” for a safer & more comfortable use. By removing one of the kick boards & with the addition of the optional ITC-WK1 Cabinet Trolley Kit for the ultimate workstation & storage system.

4 Drawer
Tooling Cabinet - ITC-4
565 X 653 X 750mm
Order Code: T7684



5 Drawer
Tooling Cabinet - ITC-5
565 X 653 X 750mm
Order Code: T7685



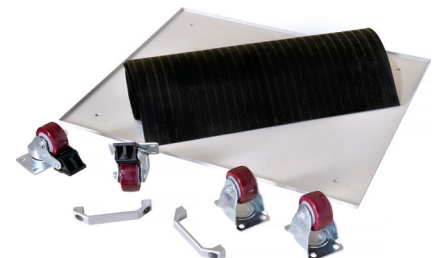
6 Drawer
Tooling Cabinet - ITC-6
565 X 653 X 750mm
Order Code: T7686



1 Shelf
Tooling Cabinet - ITC-1
565 X 653 X 750mm
Order Code: T7680



Cabinet Trolley Kit - ITC-WK1
For modular workplace storage system
Order Code: T7689





ENVIRONMENT PROTECTION

Recycle unwanted materials instead of disposing of them as waste. All tools, accessories and packaging should be sorted, taken to a recycling centre and disposed of in a manner which is compatible with the environment. When the product becomes completely unserviceable and requires disposal, drain any fluids (if applicable) into approved containers and dispose of the product and fluids according to local regulations.

Imported by

HARE & FORBES
MACHINERYHOUSE

Australian Distributor

Hare & Forbes
Machineryhouse
Sydney - Melbourne
Adelaide - Brisbane - Perth

Ph: 1300 202 200
www.machineryhouse.com.au

MACHINERYHOUSE

New Zealand Distributor

Machineryhouse
Auckland
Christchurch

Ph: 0800 142 326
www.machineryhouse.co.nz